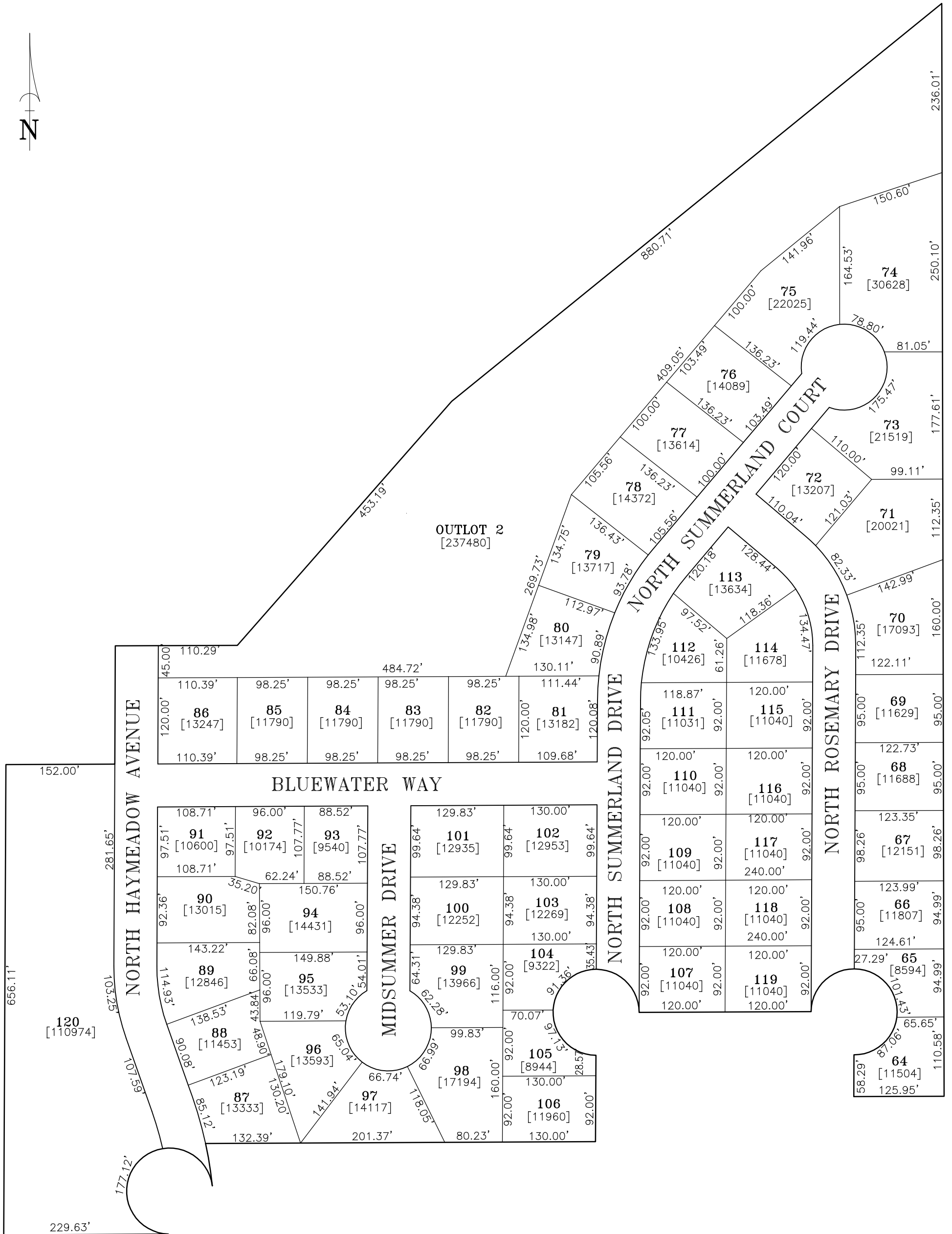


# FIRST ADDITION TO CLEARWATER CREEK

## CITY OF APPLETON, OUTAGAMIE COUNTY, WISCONSIN



**Martenson & Eisele, Inc.**

1377 Midway Road  
Menasha, WI 54952  
www.martenson-eisele.com  
info@martenson-eisele.com  
920.731.0381 1.800.236.0381

Planning  
Environmental  
Surveying  
Engineering  
Architecture